

SC
TRANSMISSION

SC Transmission

Hangzhou Speed Control Transmission

WWW.SC-TRANSMISSION.CC





WWW.SC-TRANSMISSION.COM

FRANK

Email: Frank@sc-transmission.com

M/P: 0086-15906695839

Website: www.sc-transmission.com

Address: 4-703, Tianchen International Plaza, Xiaoshan, Hangzhou, Zhejiang, China



ABOUT US

SC Transmission (Hangzhou Speed Control Transmission) , set by Frank and Tarina, dedicated to export, design, manufacture and distribution of products for power transmission, on the strength of their full knowledge and 10 years experience in this field.

SC Transmission tries to provide exceptional service to their customers in order to meet their needs in the field of power transmission such as gear reducers, gear motors, sprockets, gears (helical, spur, worm, bevel), racks, taper lock, bushes, couplings, pulleys and custom requirements as per their sample or drawings.

OUR VISION

offer the best solution for transmission in the world, make the transmission world more economic & efficient



HANGZHOU SPEED CONTROL TRANSMISSION

WWW.SC-TRANSMISSION.COM

SPEED REDUCER



零件爆炸视图及名称 Exploded view & name of parts



型号说明 Model Mark

NMRV 063-40-E-FA1-AS1 71B5 B3-7124或/or0.37-4/1

①
②
③
④
⑤
⑥
⑦
⑧
⑨
⑩

NO	说 明	Comments
1	型号代码 1).NMRV:孔输入带输入法兰 2).NRV:轴输入不带输入法兰	Model code 1).NMRV:Hole input with flange 2).NRV:Shaft input without flange
2	蜗轮蜗杆减速器中心距 (规格)	Central distance of worm gear units(spec)
3	减速器速比 (i=7.5;10;15;20;25;30;40;50;60;80;100)	Speed ratio of reducer (i=7.5;10;15;20;25;30;40;50;60;80;100)
4	1).无代号表示不带蜗杆同向输出轴 2).E:带蜗杆同向输出轴	1).No mark means single extension worm shaft 2).E: Double extension worm shaft
5	1).无代号表示不带输出法兰 2).FA,FB,FC,FD,FE(1/2):输出法兰代号和位置	1).No mark means without output flange 2).FA,FB,FC,FD,FE(1/2):output flange and position
6	1).无代号表示孔输出 2).AS(1/2):单向输出轴和位置 3).AB:双向输出轴	1).No mark means hole output 2).AS(1/2):Single output shaft and position 3).AB: Double output shaft
7	输入法兰规格型式 (不带电机时)	Normalized form of input flange(without motor)
8	安装方位代号	Installation position code
9	1).无代号表示不带电机 2).电机型号或功率、极数	1).No mark means without motor 2).Model motors (poles of power)
10	电机接线盒位置,默认位置1可以不写	Position diagram for motor terminal box default position1 can be no mention

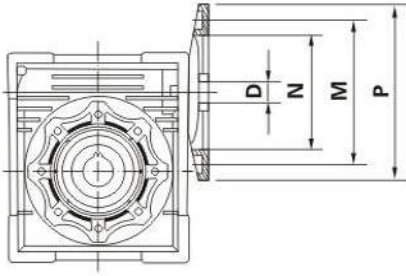
蜗杆 蜗轮旋转方向 Direction of Rotation



NMRV

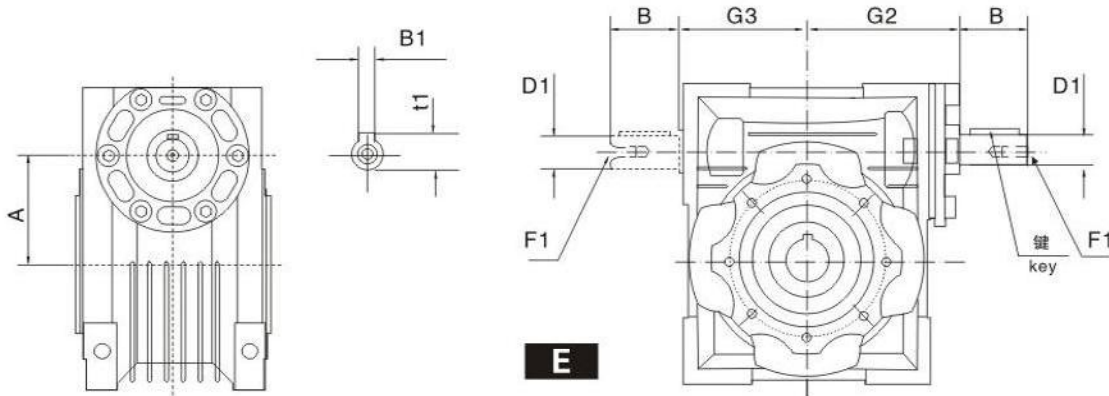


NRV



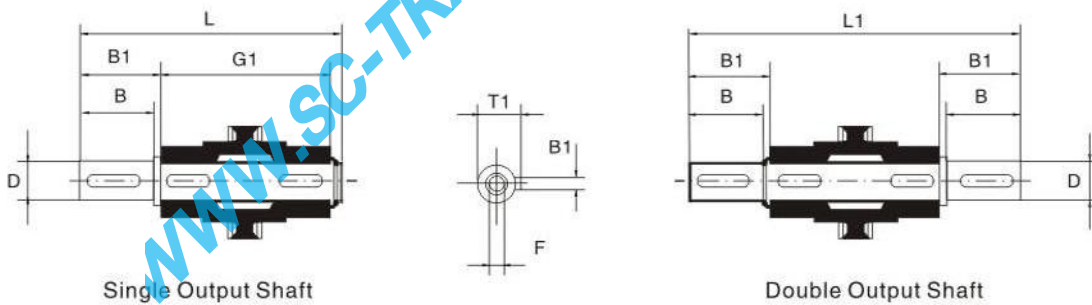
*If you want special key , please call our Technical Service

	Motor flange				D The hole diameter of input shaft										
	PAM IEC	P	M	N	Transmission ratio										
					7.5	10	15	20	25	30	40	50	60	80	100
NMRV025	56B14	80	65	50	9	9	9	9	9	9	9	9	9		
NMRV030	63B5	140	115	95	11	11	11	11	11	11	11	11			
	63B14	90	75	60											
	56B5	120	100	80	9	9	9	9	9	9	9	9	9	9	
	56B14	80	65	50											
NMRV040	71B5	160	130	110	14	14	14	14	14	14	14				
	71B14	105	85	70											
	63B5	140	115	95	11	11	11	11	11	11	11	11	11	11	11
	63B14	90	75	60											
	56B5	120	100	80								9	9	9	9
NMRV050	80B5	200	165	130	19	19	19	19	19	19					
	80B14	120	100	80											
	71B5	160	130	110	14	14	14	14	14	14	14	14	14	14	
	71B14	105	85	70											
NMRV063	63B5	140	115	95								11	11	11	11
	90B5	200	165	130	24	24	24	24	24	24	24				
	90B14	140	115	95											
	80B5	200	165	130	19	19	19	19	19	19	19	19	19	19	
	80B14	120	100	80											
NMRV075	71B5	160	130	110							14	14	14	14	14
	71B14	105	85	70											
	100/112B5	250	215	180	28	28	28								
	110/112B14	160	130	110											
	90B5	200	165	130	24	24	24	24	24	24					
	90B14	140	115	95											
	80B5	200	165	130				19	19	19	19	19	19	19	19
NMRV090	80B14	120	100	80											
	71B5	160	130	110								14	14	14	14
	100/112B5	250	215	180	28	28	28	28	28	28					
	110/112B14	160	130	110											
	90B5	200	165	130	24	24	24	24	24	24	24	24			
	90B14	140	115	95											
NMRV110	80B5	200	165	130							19	19	19	19	19
	80B14	120	100	80											
	132B5	300	265	230	38*	38*	38*	38*							
	110/112B5	250	215	180	28	28	28	28	28	28	28	28	28		
NMRV130	90B5	200	165	130					24	24	24	24	24	24	24
	80B5	200	165	130										19	19
	132B5	300	265	230	38*	38*	38*	38*	38*	38*	38*				
NMRV150	100/112B5	250	215	180					28	28	28	28	28	28	28
	90B5	200	165	130										24	24
	160B5	350	320	250	42	42	42	42	42						
NMRV150	132B5	300	265	230				38	38	38	38	38	38		
	100/112B5	250	215	180								28	28	28	28



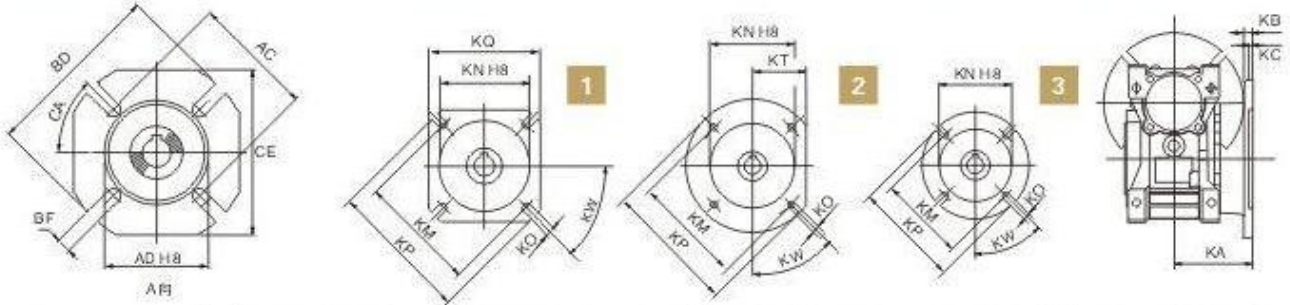
NRV	030	040	050	063	075	090	110	130	150
B	20	23	30	40	50	50	60	80	80
D1j6	9	11	14	19	24	24	28	30	35
G2	50	61	74	90	105	125	142	162	195
G3	45	53	64	75	90	108	135	155	175
A	30	40	50	63	75	90	110	130	150
B1	3	4	5	6	8	8	8	8	10
F1	-	-	M6	M6	M8	M8	M10	M10	M12
TI	10.2	12.5	16	21.5	27	27	31	33	38

OUTPUT SHAFT

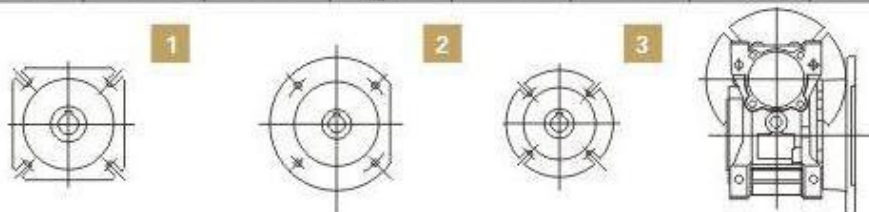


	Dh6	B	B1	G1	L	L1	F	B1	T1
NRV025	11g6	23	25.5	50	81	101	-	4	12.5
	9*	25*	30	50	85.5*	101	-	3*	10.2*
NRV030	14	30	32.5	63	102	128	M6	5	16
NRV040	18	40	43	78	128	164	M6	6	20.5
NRV050	25	50	53.5	92	153	199	M10	8	28
NRV063	25	50	53.5	112	173	219	M10	8	28
NRV075	28	60	63.5	120	192	247	M10	8	31
NRV090	35	80	84.5	140	234	309	M12	10	38
NRV110	42	80	84.5	155	249	324	M16	12	45
NRV130	45	80	85	170	265	340	M16	14	48.5
NRV150	50	82	87	200	297	374	M16	14	53.5

NMRV/NMRV-P030-150F – Dimensioni / Dimensions / Encombrements / Abmessungen / Dimensiones / 尺寸

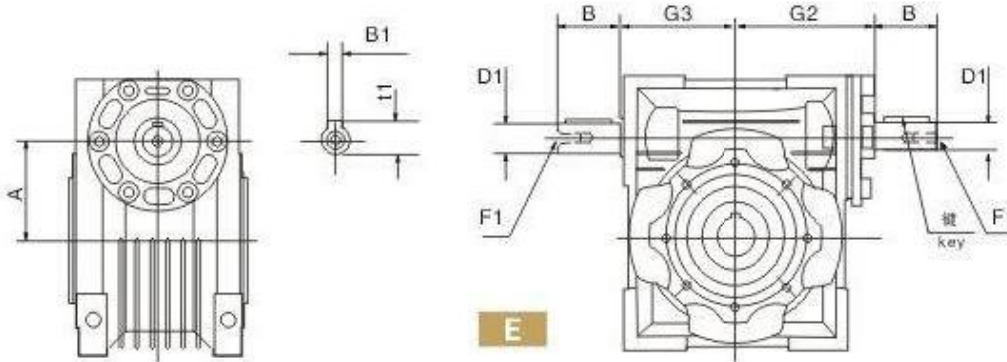


		030	040	050	063	075	090	110	130	150
FA	KA	54,5	67	90	82	111	111	131	140	155
	KB	6	7	9	10	13	13	15	15	15
	KC	4	4	5	6	6	6	6	6	6
	KN	50	60	70	115	130	152	170	180	180
	KM	68	80min	90min	150	165	175	230	255	255
	KO	6,5(n° 4)	9(n° 4)	11(n° 4)	11(n° 4)	14(n° 4)	14(n° 4)	14(n° 8)	16(n° 8)	16(n° 8)
	KP	80	110	125	180	200	210	280	320	320
	KQ	70	95	110	142	170	200	260	290	290
	KW	45°	45°	45°	45°	45°	45°	45°	22,5°	22,5°
	FB	KA	-	97	120	112	90	122	180	-
KB		-	7	9	10	13	18	15	-	-
KC		-	4	5	6	6	6	6	-	-
KN		-	60	70	115	110	180	170	-	-
KM		-	80min	90min	150	130	215	230	-	-
KO		-	9(n° 4)	11(n° 4)	11(n° 4)	14(n° 4)	14(n° 4)	14(n° 8)	-	-
KP		-	110	125	180	160	250	280	-	-
KQ		-	95	110	142	-	-	260	-	-
KT		-	-	-	-	-	105	-	-	-
KW		-	45°	45°	45°	45°	45°	45°	-	-
FC	KA	-	80	89	98	-	110	-	-	-
	KB	-	9	10	10	-	17	-	-	-
	KC	-	5	5	5	-	6	-	-	-
	KN	-	95	110	130	-	130	-	-	-
	KM	-	115	130	165	-	165	-	-	-
	KO	-	9,5(n° 4)	9,5(n° 4)	11(n° 4)	-	11(n° 4)	-	-	-
	KP	-	140	160	200	-	200	-	-	-
	KT	-	56	66	80	-	-	-	-	-
	KW	-	45°	45°	45°	-	45°	-	-	-
	FD	KA	-	58	72	107	-	151	-	-
KB		-	12	13	10	-	13	-	-	-
KC		-	5	5	5	-	6	-	-	-
KN		-	80	95	130	-	152	-	-	-
KM		-	100	115	165	-	175	-	-	-
KO		-	9(n° 4)	11(n° 4)	11(n° 4)	-	14(n° 4)	-	-	-
KP		-	120	140	200	-	210	-	-	-
KQ		-	-	-	-	-	200	-	-	-
KT		-	90	60	-	-	-	-	-	-
KW		-	45°	45°	45°	-	45°	-	-	-
FE	KA	-	-	-	80,5	-	-	-	-	-
	KB	-	-	-	16,5	-	-	-	-	-
	KC	-	-	-	5	-	-	-	-	-
	KN	-	-	-	110	-	-	-	-	-
	KM	-	-	-	130	-	-	-	-	-
	KO	-	-	-	11(n° 4)	-	-	-	-	-
	KP	-	-	-	160	-	-	-	-	-
KW	-	-	-	45°	-	-	-	-	-	



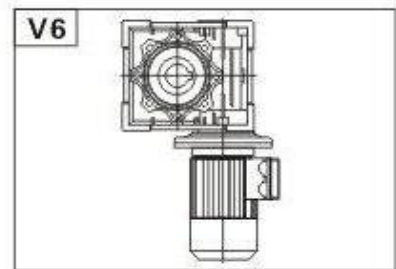
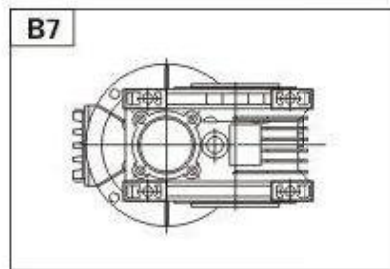
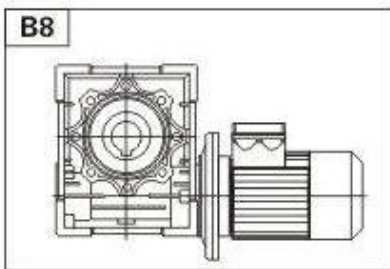
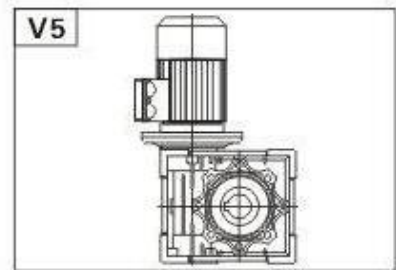
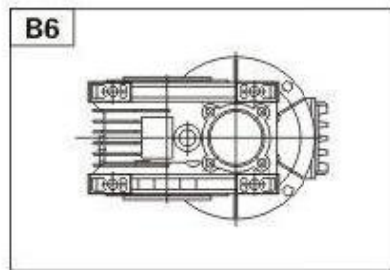
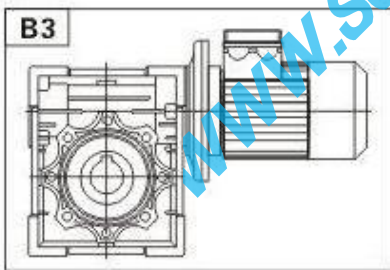
	030	040	050	063	075	090	110	130	150
FA	1	1	1	1	1	1	1	1	1
FB	-	1	1	1	3	2	1	-	-
FC	-	2	2	2	-	3	-	-	-
FD	-	2	2	2	-	1	-	-	-
FE	-	-	-	3	-	-	-	-	-

NRV安装尺寸(NRV Mounting dimensions)



NRV	030	040	050	063	075	090	110	130	150
B	20	23	30	40	50	50	60	80	80
D1j6	9	11	14	19	24	24	28	30	35
G2	50	61	74	90	105	125	142	162	195
G3	45	53	64	75	90	108	135	155	175
A	30	40	50	63	75	90	110	130	150
B1	3	4	5	6	8	8	8	8	10
F1	-	-	M6	M6	M8	M8	M10	M10	M12
TI	10.2	12.5	16	21.5	27	27	31	33	38
输入轴平键									
规格	3x3	4x4	5x5	6x6	8x7	8x7	8x7	8x7	10x8
长度	15	20	25	35	45	45	55	70	70

单级安装型式 single Step Mounting Positions



UD 系列无级变速器 UD Series Stepless Variator

概述

UD 系列无级变速器:即行星锥盘无级变速器,是为适应社会需求,并结合国外技术开发的新一代产品。可广泛应用于运输、陶瓷、包装、化工、轻纺、食品、医药、印刷、橡塑、机床及各种需调速的自动生产线、运输线、装配流水线等场合。产品主要特点如下:

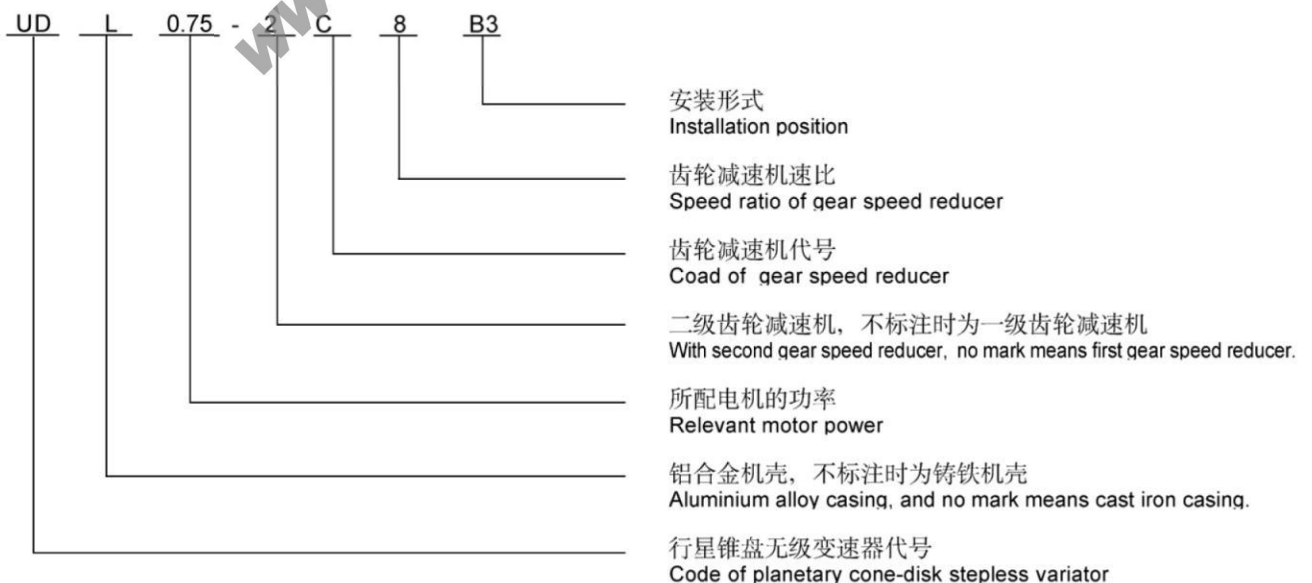
- 1.调速精度高,达到 0.5 ~ 1 转;
- 2.变速范围大,速比可在 1/1.4 ~ 1/7 之间任意调节;
- 3.强度高,寿命长;
- 4.运转平稳、噪音低、性能稳定,可连续运转工作,还可正反向运转;
- 5.调速方便,结构紧凑、体积小;
- 6.全密封,环境适应性强;
- 7.适应性好,与减速机组合可实现低速无级变速;
- 8.采用优质铝合金压铸成型,且外型美观、重量轻、永不生锈。

Summary

UD series planet cone-disk stepless variator is a new generation of products developed by ourselves on the basis of introducing foreign advanced technology. UD series stepless variator are widely used for conveying, ceramics, packing, chemical, textile, foodstuffs, medicine, printing, rubber, Machine-tools, and all kinds of automatic production lines, pipelines and assembly lines which need speed-regulation, etc. Its main features are follows:

- 1.High speed-regulating precision: up to 0.5~1 rotation.
- 2.Large speed-changing range: The speed ratio ranges from 1/1.4 to 1/7 freely.
- 3.High in strength and long in service life.
- 4.Smooth in driving, low in noise, stable in performance, continuous in running and front-to-back in running direction.
- 5.Convenient to regulate the speed, and compact in structure and small in volume.
- 6.Full in sealing and suitable for any environment.
- 7.Easy in adaptation: it can be combined with all kinds of speed reducers, as to achieve low stepless speed-changing.
- 8.Made of high-quality aluminium alloy diecast in to forming, good-looking in appearance, light in weight and it never gets rusty.

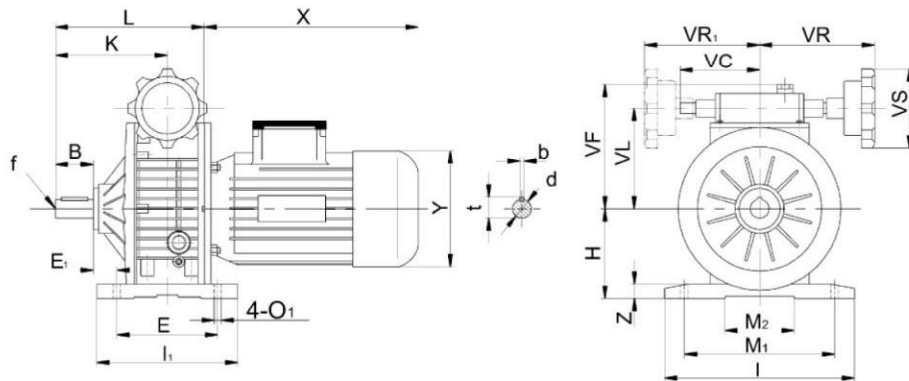
型号及表示方法 Type & Expressions



UD 基本型外形及安装尺寸

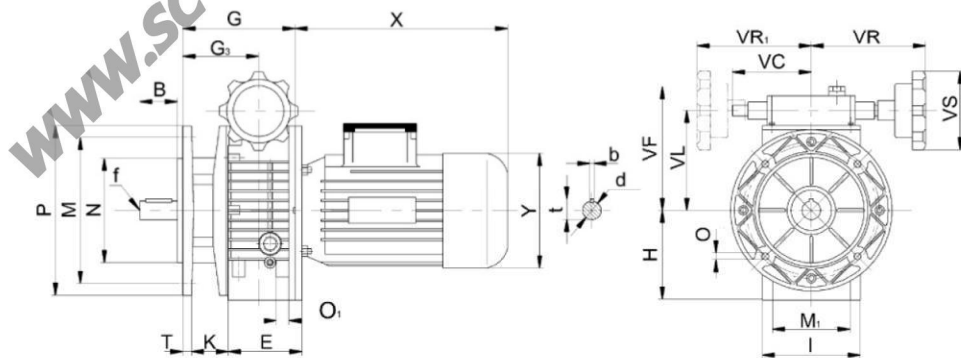
UD basic model installation dimensions

B3 型 Model



型号 Type	B	d(j6)	E	E ₁	H	I	I ₁	K	L	M ₁	M ₂	O ₁	VC	VF	VL	VR	VR ₁	VS	b	f	t	X	Y	Z
UDL0.18B3	23	11	105	17.5	80	145	120	87.5	135.5	110	71	9	71	111	78	110	110	85	4	-	12.5	200	120	10
UDL0.37B3	30	14	104	20	93	149	125	104	140	120	96	9	71	123	90	110	110	85	5	M6	16	227	141	10
UDL0.75B3	40	19	125	26	113	190	150	125.5	179	160	135	11	79	140	107	120	120	110	6	M6	21.5	268	160	15
UD1.1B3	40	24	105	34.5	100	207	130	136	187	160	115	13	-	124	102	150	-	110	8	M8	27	265	195	15
UD1.5B3	50	24	115	53.5	123	241	150	165	238	190	143	13	-	144	122	150	-	110	8	M8	27	290	195	18
UD2.2B3	60	30	230	25	150	300	270	191	268	245	190	14	-	188	150	160	-	110	8	M8	33	320	215	25
UD3.0B3	60	30	230	25	150	300	270	191	268	245	190	14	-	188	150	160	-	110	8	M8	33	320	215	25
UD4.0B3	60	30	230	25	150	300	270	191	268	245	190	14	-	188	150	160	-	110	8	M8	33	340	240	25
UD5.5B3	70	35	250	33	200	365	290	201	319	315	245	18	-	-	192	194	-	110	10	M10	38	395	275	30
UD7.5B3	70	35	250	33	200	365	290	201	319	315	245	18	-	-	192	194	-	110	10	M10	38	435	275	30

B5 型 Model

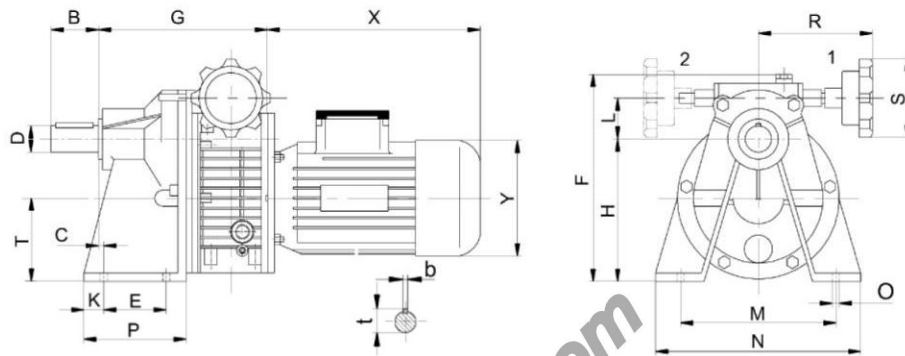


型号 Type	B	d(j6)	E	G	G ₁	H	I	M	M ₁	N	D	D ₁	P	T	K	VC	VF	VL	VR	VR ₁	VS	b	f	t	X	Y
UDL0.18B5	23	11	50	112.5	64.5	70	72	115	60	95	9	M6	140	3.5	46	71	111	78	110	110	85	4	-	12.5	200	120
UDL0.37B5	30	14	40	110	74	80	90	130	77	110	9	M8	160	3.5	53	71	123	90	110	110	85	5	M6	16	227	141
UDL0.75B5	40	19	58	139	85.5	100	98	165	84	130	11	M8	200	3.5	60	79	140	107	120	120	110	6	M6	21.5	268	160
UD1.1B5	40	24	-	147	95	98	207	165	-	130	11	-	200	3.5	-	-	124	102	150	-	110	8	M8	27	265	195
UD1.5B5	50	24	-	188	115	126	241	165	-	130	11	-	200	3.5	-	-	144	122	150	-	110	8	M8	27	290	195
UD2.2B5	60	30	-	208	131	150	270	265	-	230	15	-	300	4	-	-	188	150	160	-	110	8	M8	33	320	215
UD3.0B5	60	30	-	208	131	150	270	265	-	230	15	-	300	4	-	-	188	150	160	-	110	8	M8	33	320	215
UD4.0B5	60	30	-	208	131	150	270	265	-	230	15	-	300	4	-	-	188	150	160	-	110	8	M8	33	340	240
UD5.5B5	70	35	-	244	131	200	-	300	-	250	19	-	350	5	-	-	-	192	194	-	110	10	M10	38	395	275
UD7.5B5	70	35	-	244	131	200	-	300	-	250	19	-	350	5	-	-	-	192	194	-	110	10	M10	38	435	275

基本型与一级齿轮减速机组合外形及安装尺寸

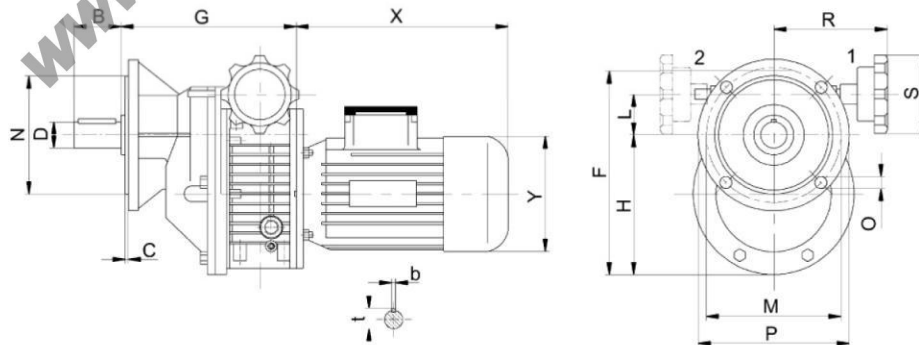
Basic model-single stage gear reducer installation dimensions

B3 型 Model



型号 Type	B	C	D	t	b	E	F	G	H	Y	L	M	N	O	P	R	S	T	X	K
UDL0.18-CB3	40	18	19	21.5	6	45	162	189	108	120	33	115	130	9	80	110	85	66	200	16
UDL0.37-CB3	50	6	24	27	8	70	187	190	130	141	39	150	190	10	110	110	85	79	227	15
UDL0.75-CB3	60	7	28	31	8	70	228	225	160	160	46	165	210	12	130	130	110	99	268	25

B5 型 Model

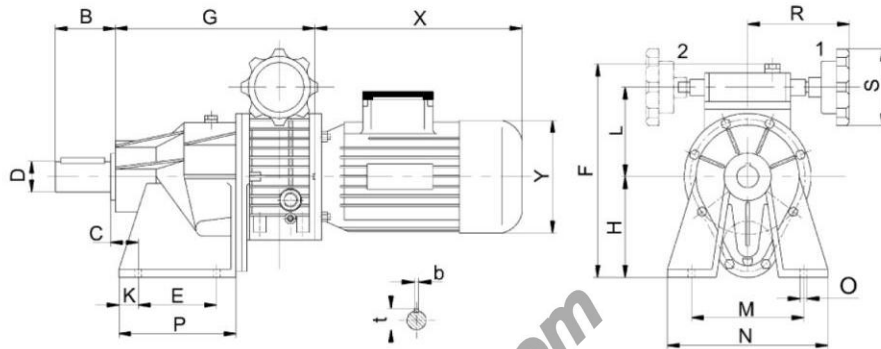


型号 Type	B	C	D	t	b	F	G	H	Y	L	M	N	O	P	R	S	X
UDL0.18-CB5	40	3	19	21.5	6	176	191	105	120	33	115	95	9	140	110	85	200
UDL0.37-CB5	50	4	24	27	8	208	192	128	141	39	130	110	10.5	160	110	85	227
UDL0.75-CB5	60	4	28	31	8	255	227	155	160	46	165	130	12.5	200	130	110	268

基本型与二级齿轮减速机组合外形及安装尺寸

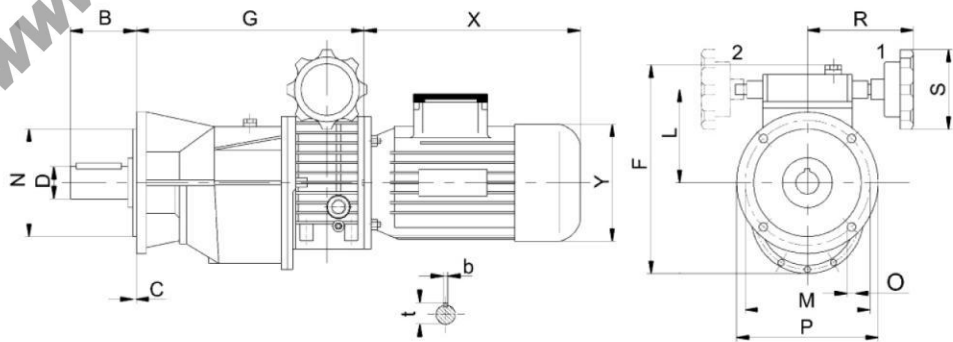
Basic model-double stage gear reducer installation dimensions

B3型 Model



型号Type	B	C	D	t	b	E	F	G	H	Y	L	M	N	O	P	R	S	X	K
UDL0.18-2CB3	40	27	19	21.5	6	70	201	229	105	120	78	105	130	9	120	110	85	200	21
UDL0.37-2CB3	55	25	28	31	8	85	216	238	110	141	90	150	190	10	140	110	85	227	19
UDL0.75-2CB3	65	34	32	35	10	90	261	278	154	160	107	185	230	12	150	130	110	268	21

B5型 Model



型号Type	B	C	D	t	b	F	G	Y	L	M	N	O	P	R	S	X
UDL0.18-2CB5	40	3	19	21.5	6	198	231	120	78	115	95	9	140	110	85	200
UDL0.37-2CB5	65	4	28	31	8	223	240	141	90	130	110	10.5	160	110	85	227
UDL0.75-2CB5	65	4	32	35	10	262	280	160	107	165	130	12.5	200	130	110	268

性能参数 Performance parameters

基本型

Basic Model

输入 Input	型号 Type	减速比 <i>i</i> Ratio	输出 Output	
			n_2 (r/min)	M_2 (N.m)
0.18KW	UDL0.18	1.6~8.2	880~170	1.5~3
0.37KW	UDL0.37	1.4~7	1000~200	3~6
0.55KW	UDL0.55	1.4~7	1000~200	4~8
0.75KW	UDL0.75	1.4~7	1000~200	6~12
1.1KW	UD1.1	1.4~7	1000~200	9~18
1.5KW	UD1.5	1.4~7	1000~200	12~24
2.2KW	UD2.2	1.4~7	1000~200	18~36
3.0KW	UD3.0	1.4~7	1000~200	24~48
4.0KW	UD4.0	1.4~7	1000~200	32~64
5.5KW	UD5.5	1.4~7	1000~200	45~90
7.5KW	UD7.5	1.4~7	1000~200	59~118

基本型与齿轮减速机组合

Basic model-gear speed reducer

输入 Input	型号 Type	减速比 <i>i</i> Ratio	输出 Output	
			n_2 (r/min)	M_2 (N.m)
0.18KW 4P $n_1=1400$ r/min	UDL0.18-C	2.5	352~68	3.5~7.4
		3.3	266~51.5	4.7~10
		5	176~34	7~15
	UDL0.18-2C	8	110~21	10~20
		11	80~15.5	14~28
		13.3	66~13	17~34
		16.6	53~10	21~42
0.37KW 4P $n_1=1400$ r/min	UDL0.37-C	2.5	400~80	7.3~15
		3.3	300~60	9.5~20
		5	200~40	15~30
	UDL0.37-2C	8	125~25	20~40
		11	90~18	28~56
		13.3	75~15	34~68
		16.6	60~12	42~84
0.75KW 4P $n_1=1400$ r/min	UDL0.75-C	2.5	400~80	15~29
		3.3	300~60	19~38
		5	200~40	30~60
	UDL0.75-2C	8	125~25	40~80
		11	90~18	54~108
		13.3	75~15	68~136
		16.6	60~12	84~168
		20	50~10	96~140

使用说明 Usage specifications

- 1、联轴器与电动机联接时应使轴线保持同心，安装误差不应大于所用联轴器的允许误差值。
- 2、输出轴装联轴器或带轮时，用轴端螺孔压入，或加热装配，严禁锤击。
- 3、机械无级变速器不宜用于可能超负载或堵转使用场合。
- 4、调速应在运转中进行，严禁停车时转动调速手轮。
- 5、操作盒下的两端调速限位螺钉已调整好，请勿再动。
- 6、本机不宜工作在高于 40℃ 的环境中，温升不得高于 45℃。

变速器跑合（空车运转）开始时，温度可高于正常工作环境温度约 40~50℃。跑合 60~80 小时后，温升逐渐下降，此后，温度高于环境温度约 20℃，并保持稳定的温升。跑合时的高温对部件的使用寿命并无有害影响（建议：在使用前进行空车运转）。

- 7、变速器采用润滑油油浴润滑。润滑油牌号为 Ub-3。使用前请检查油位。
- 8、出厂前润滑油已加入，首次使用 1000 小时后应更换润滑油。
- 9、变速器内润滑油应保持在油标的三分之一高度，用户应经常检查油位高度，严禁在润滑不良的情况下使用。操作盒上透气螺母出厂时为防止搬运中漏油已旋紧，运转时须松开，严禁未松开使用。

1. The shaft lines should be kept concentric when the coupling is connected with a motor. The installation error should be no more than the tolerance value of the coupling.
2. When the output shaft is installed with the coupling or belt wheel, they should be press into the screw hole on shaft end, or assembled by heating. No hammering on it.
3. The mechanical stepless speed variator is not used in such a occasion where overload or running-blockage happen to occur.
4. Speed-regulation should be effected in running. No turning the hand wheel of speed-regulation when the machine stops.
5. The banking screws of speed-regualtion on two ends under the operating box are well adjusted. Please don't touch them.
6. This set is not suited to work in the environment of above 40℃, especially no more than 45℃ when the temperature goes up.

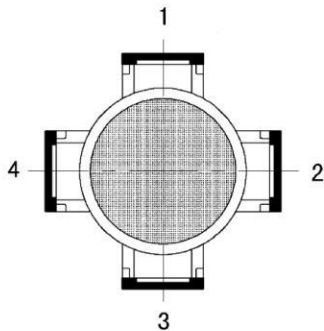
When the variator starts to work (without load), the temperature rise higher than normal, up to 40~50℃ above the environment temperature. After 60~80 hours running, the temperature will decrease gradually. Finally, the temperature will be about 20℃ higher than surrounding and keep stable. The high temperature at beginning do not damage any parts

of variator and do not affect its service life. (Suggestion: running without load at first.)

7. The liquid lubricating oil is used for the speed variator. Its trade mark is Ub-3. please check up the oil level before use.
8. The machine is filled with lubricating oil before leaving the factory. When it starts to work up to 1000 hours for the first time, its lubricating oil should be replaced.
9. The lubricating oil level inside the speed variator should be kept at the height of one-third in the oil scale. Users should usually check up the height of oil level.

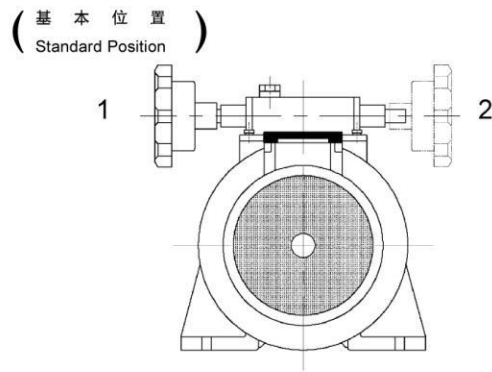
It is strictly prohibited to operate it short of lubricating oil. The air screw nut on the operating box is screwed up for preventing from oil leakage in moving when leaving the factory.

It should be loosed when it start to run. It is strictly forbidden to use it before loosing.



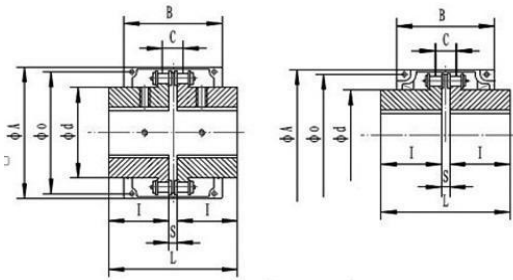
电机接线盒位置图

Position diagram for motor terminal box

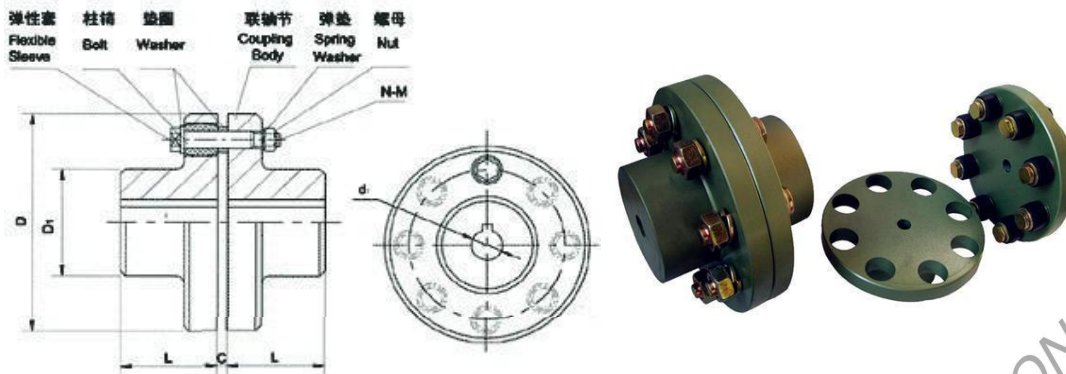


手轮位置图

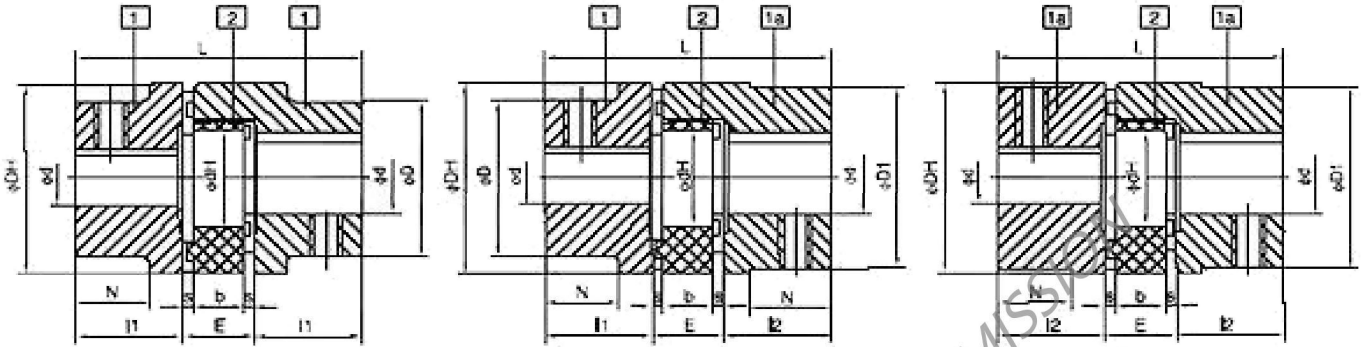
Hand wheel position diagram



SIZE	BORE	Pilot	A	d	O	L	I	S	B	C	BOLT	TORQUE ARM (Nm)	最大转速 (rpm)	转动惯量 (kg. cm ²)	WEIGHT
															(kg)
3012	12-16	12	69	25	45	64.8	29.8	5.2	63	10.2	6M	190	5000	3.7	0.4
4012	12-22	12	77	33	62	79.4	36	7.4	72	14.4	6M	249	4800	5.5	0.8
4014	12-28	12	84	43	69	79.4	36	7.4	75	14.4	6M	329	4800	9.7	1.1
4016	14-32	14	92	48	77	87.4	40	7.4	75	14.4	6M	429	4800	14.4	1.4
5014	15-35	14	101	53	86	99.7	45	9.7	85	18.1	8M	620	3600	28	2.2
5016	16-40	16	111	60	93	99.7	45	9.7	85	18.1	8M	791	3600	37	2.7
5018	16-45	16	122	70	106	99.7	45	9.7	85	18.1	8M	979	3000	56.3	3.8
6018	20-56	20	142	85	127	123.5	56	11.5	105	22.8	10M	1810	2500	137.3	6.2
6020	20-60	20	158	98	139	123.5	56	11.5	105	22.8	10M	2210	2500	210.2	7.8
6022	20-71	20	168	110	151	123.5	56	11.5	117	22.8	10M	2610	2500	295	10.4
8018	20-80	20	190	110	169	141.2	63	15.2	129	29.3	12M	3920	2000	520	12.7
8020	20-90	20	210	121	185	145.2	65	15.2	137	29.3	12M	4800	2000	812.4	16
8022	20-100	20	226	140	202	157.2	71	15.2	137	29.3	12M	5640	1800	1110	20.2
10020	25-110	25	281	160	233	178.8	80	18.8	153	35.8	12M	8400	1800	2440	33
12018	35-125	35	307	170	256	202.7	90	22.7	181	45.4	12M	12700	1500	3940	47
12022	35-140	35	357	210	304	222.7	100	22.7	181	45.5	12M	18300	1250	7810	72
16018	63-160	35	375	228	340	254.1	112	30.1	240	58.5	16M	26400	1100	14530	108
16022	80-200	70	440	279	405	310.1	140	30.1	245	58.5	16M	37100	1000	32220	187
20018	82-205	75	465	289	425	437.5	200	37.5	285	71.6	20M	54100	800	50980	286
20022	100-255	90	545	263	506	477.5	220	37.5	300	71.6	20M	77800	600	111100	440
24022	120-310	110	650	448	607	650	302.5	45	340	87.8	20M	137000	600	310000	869
24026	150-360	140	745	526	704	700	327.5	45	350	87.8	20M	186000	500	598500	1260



SIZE	N.m	r/min	D	D1	d1	L	C	n-M	kg	
FCL90	4	4000	90	35.5	11	28	3	4-M8	1.7	
FCL100	10	4000	100	40	11	35.5	3	4-M10	2.3	
FCL112	16	4000	112	45	13	40	3	4-M10	2.8	
FCL125	25	4000	125	65	50	13	45	3	4-M12	4
FCL140	50	4000	140	71	63	13	50	3	6-M12	5.4
FCL160	110	4000	160	80	15	56	3	8-M12	8	
FCL180	157	3500	180	90	15	63	3	8-M12	10.5	
FCL200	245	3200	200	100	21	71	4	8-M20	16.2	
FCL224	392	2850	224	112	21	80	4	8-M20	21.3	
FCL250	618	2550	250	125	25	90	4	8-M24	31.6	
FCL280	980	2300	280	140	34	100	4	8-M24	44	
FCL315	1568	2050	315	160	41	112	4	10-M24	57.7	
FCL355	2450	1800	355	180	60	125	5	8-M30	89.5	
FCL400	3920	1600	400	200	60	125	5	10-M30	113	
FCL450	6174	1400	450	224	65	140	5	12-M30	145	
FCL560	9800	1150	560	250	85	160	5	14-M30	229	
FCL630	15680	1000	630	280	95	180	5	18-M30	296	

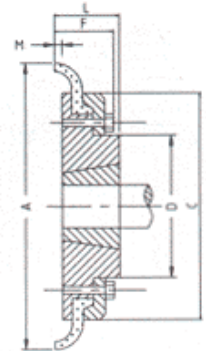
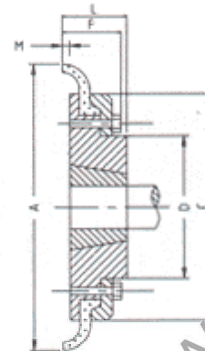
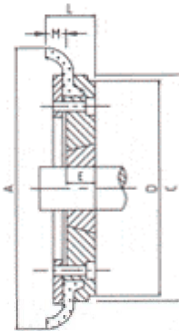
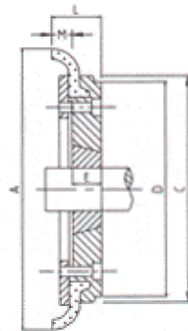
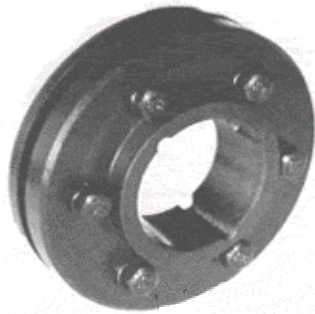


Material:AL

Catalog	Part	Elastomer Rating Moment			Collectivity Size (mm)											Moment of inertia (kg.cm ²)	G (kg)	
		Yellow (Nm)	Red (Nm)	Moment of inertia (kg.cm ²)	Bore (d)		L	I1	I2	E	b	s	N	DH	D,D1			dH
					Pilot	Max												
GE-14	1a	7.5	12.5	0.004	—	16	35	11	13	10	1.5	0	30	30	10	0.025	0.020	
GE-19	1	10	17	0.030	—	19	66	25	16	12	2	20	41	32	18	0.105	0.054	
	1a				24	41												
GE-24	1	35	60	0.100	—	24	78	30	18	14	2	24	56	40	27	0.370	0.110	
	1a				28	56												
GE-28	1	95	160	0.200	—	28	90	35	20	15	2.5	28	67	48	30	0.900	0.180	
	1a				38	67								1.860				0.255



FLEXIBLE COUPLING



F FLANGE

H FLANGE

F FLANGE

H FLANGE

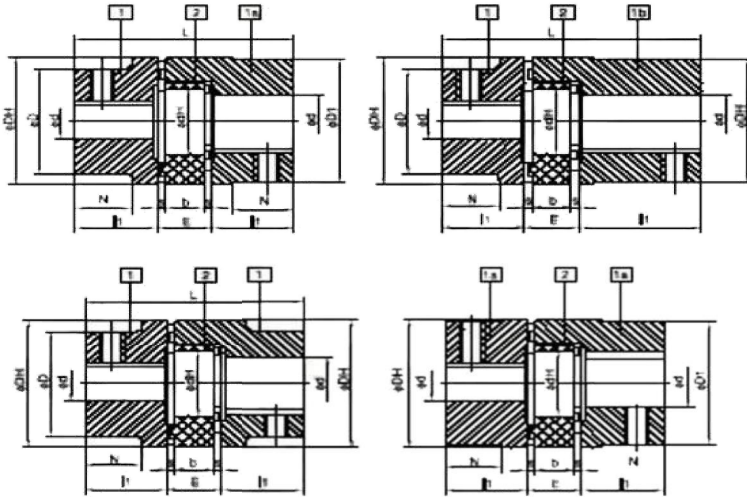
Size	TYPE	Bush NO:	Msx. Bore		Types F&H			Type B		Screw over key	A	C	D	F	Gs	M
			mm	inch	L	E	J	L	E							
A40	B	--	32	--	--	--	29	33	22	1/4"UNC	104	82	--	--	--	11.0
A40	F	1008	25	1"	33	22	29	--	--	--	104	82	--	--	--	11.0
A40	H	1008	25	1"	33	22	29	--	--	--	104	82	--	--	--	11.0
A50	B	--	38	--	--	--	38	45	32	1/4"UNC	133	100	79	--	--	12.5
A50	F	1210	32	1 1/4"	38	25	38	--	--	--	133	100	79	--	--	12.5
A50	H	1210	32	1 1/4"	38	25	38	--	--	--	133	100	79	--	--	12.5
A60	B	--	45	--	--	--	38	55	38	1/4"UNC	165	125	70	--	--	16.5
A60	F	1610	42	1 5/8"	42	25	38	--	--	--	165	125	103	--	--	16.5
A60	H	1610	42	1 5/8"	42	25	38	--	--	--	165	125	103	--	--	16.5
A70	B	--	50	--	--	--	--	47	35	3/8"UNC	187	144	80	50	13	11.5
A70	F	1610	42	1 5/8"	44	25	38	--	--	--	187	144	73	50	13	11.5
A70	H	1610	42	1 5/8"	42	25	38	--	--	--	187	144	73	50	13	11.5
A80	B	--	60	--	--	--	--	55	42	3/8"UNC	211	167	97	54	16	12.5
A80	F	2012	50	2"	45	32	42	--	--	--	211	167	93	54	16	12.5
A80	H	2012	50	2"	45	32	42	--	--	--	211	167	93	54	16	12.5
A90	B	--	70	--	--	--	--	63.5	49	1/2"UNC	235	188	112	60	16	13.5
A90	F	2517	60	2 1/2"	59.5	45	48	--	--	--	235	188	108	60	16	13.5
A90	H	2517	60	2 1/2"	59.5	45	48	--	--	--	235	188	108	60	16	13.5
A100	B	--	80	--	--	--	--	70.5	56	1/2"UNC	254	216	125	62	16	13.5
A100	F	2517	60	2 1/2"	59.5	45	48	--	--	--	254	216	120	62	16	13.5
A100	H	2517	60	2 1/2"	59.5	45	48	--	--	--	254	216	120	62	16	13.5
A110	B	--	90	--	--	--	--	75.5	63	1/2"UNC	279	233	128	62	16	12.5
A110	F	2517	60	2 1/2"	57.5	45	48	--	--	--	279	233	137	62	16	12.5
A110	H	2517	60	2 1/2"	57.5	45	48	--	--	--	279	233	137	62	16	12.5
A120	B	--	100	--	--	--	--	84.5	70	5/8"UNC	314	264	143	67	16	14.5
A120	F	3020	75	3"	65.5	51	55	--	--	--	314	264	149	67	16	14.5
A120	H	3020	75	3"	65.5	51	55	--	--	--	314	264	149	67	16	14.5
A140	B	--	120	--	--	--	--	111	94	3/4"UNC	359	311	178	73	17	16.0
A140	F	3535	90	3 1/2"	105	89	89	--	--	--	359	311	195	73	17	16.0
A140	H	3535	90	3 1/2"	105	89	89	--	--	--	359	311	195	73	17	16.0
A160	B	--	140	--	--	--	--	117	102	3/4"UNC	402	345	187	78	19	15.0
A160	F	4040	110	4 1/4"	117	102	92	--	--	--	402	345	215	78	19	15.0
A160	H	4040	110	4 1/4"	117	102	92	--	--	--	402	345	215	78	19	15.0
A180	B	--	150	--	--	--	--	137	114	3/4"UNC	470	398	200	94	19	23.0
A180	F	4545	120	4 3/4"	137	114	104	--	--	--	470	398	251	94	19	23.0
A180	H	4545	120	4 3/4"	137	114	104	--	--	--	470	398	251	94	19	23.0
A200	B	--	150	--	--	--	--	138	114	3/4"UNC	508	429	200	103	19	24.0
A200	F	4545	120	4 3/4"	138	114	104	--	--	--	508	429	266	103	19	24.0
A200	H	4545	120	4 3/4"	138	114	104	--	--	--	508	429	266	103	19	24.0



HANGZHOU SPEED CONTROL TRANSMISSION

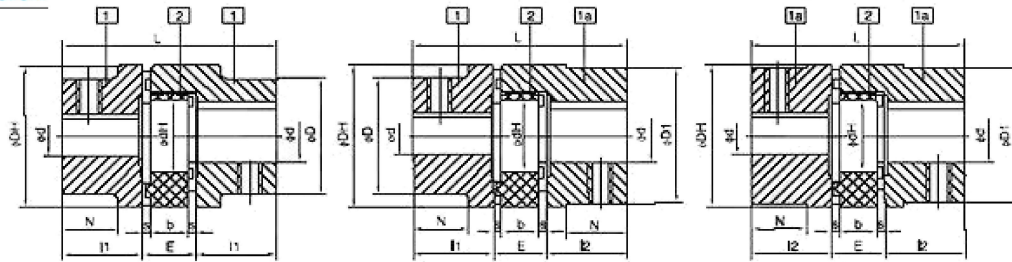
TRANSMISSION

WWW.SC-TRANSMISSION.COM



Material:GG25

Catalog	Part	Elastomer Rating Moment			Collectivity Size (mm)											Moment of inertia(kg.cm ²)	G (kg)
		Yellow (Nm)	Red (Nm)	Moment of inertia (kg.cm ²)	Bore (d)		L	H _{1/2}	E	b	s	N	DH	D,D1	dH		
					Pilot	Max											
GE-38	1	190	325	0.50	10	38	114	45	24	18	3	37	80	66	38	8.51	1.01
	1a				20	45								78		12.70	1.17
	1b				164	70								62		19.40	1.73
GE-42	1	265	450	1.00	10	42	126	50	26	20	3	40	95	75	46	17.95	1.56
	1a				30	55								94		30.00	1.88
	1b				176	75								65		43.10	2.68
GE-48	1	310	525	2.00	12	48	140	56	28	21	3.5	45	105	85	51	30.41	2.15
	1a				30	60								104		49.56	2.55
	1b				188	80								69		68.58	3.51
GE-55	1	410	685	3.00	15	55	160	65	30	22	4	52	120	98	60	61.44	3.25
	1b				40	70								118		94.56	5.20
GE-65	1	625	940	5.00	20	65	185	75	35	26	4.5	47	135	115	68	140.65	4.96
GE-75	1	1280	1920	20.00	25	75	210	85	40	30	5	53	160	135	80	308.92	7.82
GE-90	1	2400	3600	40.00	35	90	245	100	45	34	5.5	62	200	160	100	830.75	13.40



Material:GGG40

Catalog	Part	Elastomer Rating Moment			Collectivity Size (mm)											Moment of inertia (kg.cm ²)	G (kg)
		Yellow (Nm)	Red (Nm)	Moment of inertia (kg.cm ²)	Bore (d)	L	L1	E	b	s	N	DH	D	dH			
GE-100	1	3300	4950	70	45	115	270	110	50	38	6	89	225	180	113	1157	16.8
GE-110	1	4800	7200	150	55	125	295	120	55	42	6.5	96	255	200	127	2073	23.9
GE-125	1	6650	10000	250	55	145	340	140	60	46	7	112	290	230	147	4071	35.6
GE-140	1	8550	12800	400	55	160	375	155	65	50	7.5	124	320	255	165	7391	48.3
GE-160	1	12800	19200	800	75	185	425	175	75	57	9	140	370	290	190	14441	70.3
GE-180	1	18650	28000	1730	80	200	475	185	85	64	11	156	420	325	220	26417	108.0

Material:Steel

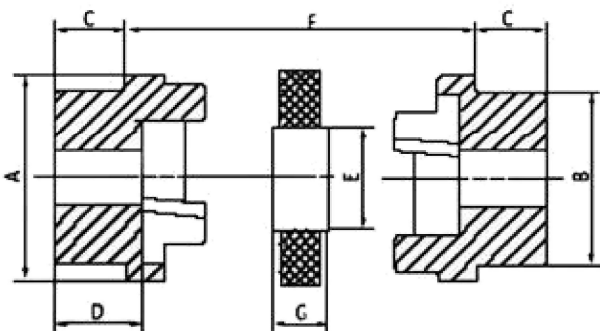
GE-19	1a	10	17	0.03	—	25	66	25	16	12	2	—	40	40	18	0.48	0.18
	1b						90	37								0.68	0.23
GE-24	1a	35	60	0.1	—	35	78	30	18	14	2	—	55	55	27	1.99	0.37
	1b						118	50								3.16	0.59
GE-28	1a	95	160	0.2	—	40	90	35	20	15	2.5	—	65	65	30	4.58	0.64
	1b						140	60								7.50	1.02
GE-38	1	190	325	0.5	—	48	114	45	24	18	3	27	80	70	38	10.14	1.01
	1b						164	70						20.10		1.84	
GE-42	1	265	450	1.0	—	55	126	50	26	20	3	28	95	85	46	24.63	1.56
	1b						176	75						44.75		2.92	
GE-48	1	310	525	2.0	—	62	140	56	28	21	3.5	32	105	95	51	40.43	2.15
	1b						188	80						69.88		4.05	
GE-55	1	410	685	3.0	—	74	160	65	30	22	4	37	120	110	60	79.64	3.25
	1b						210	90						130.82		6.10	
GE-65	1	625	940	5.0	—	80	185	75	35	26	4.5	47	135	115	68	127.38	4.96
	1b						235	100						239.72		8.91	
GE-75	1	1280	1920	20.0	—	95	210	85	40	30	5	53	160	135	80	276.50	7.82
	1b						260	110						517.55		14.01	
GE-90	1	2400	3600	40.0	—	110	245	100	45	34	5.5	62	200	160	100	768.89	13.40
	1b						295	125						1495.65		25.01	

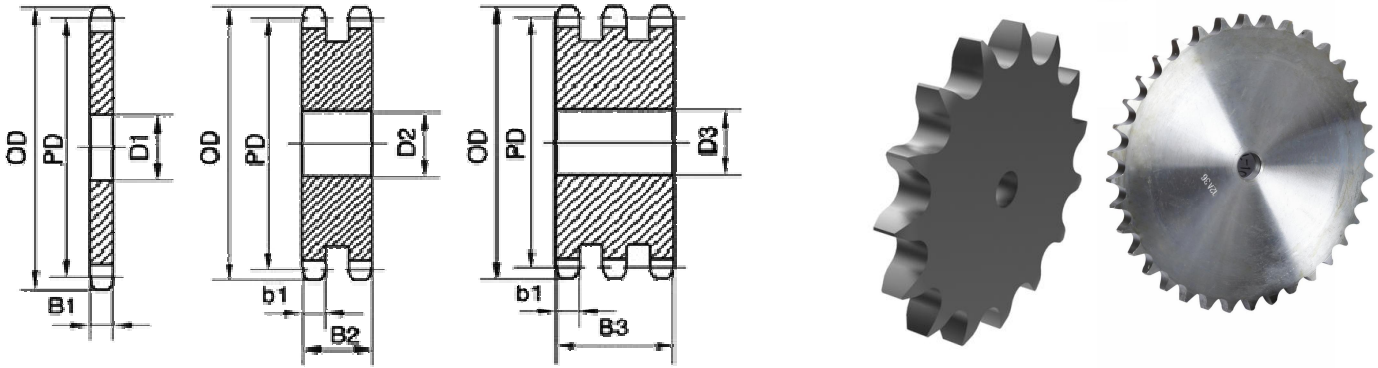
HRC - Standard straight bore series (lengthen type)

SIZE	MAX BORE		DIMENSIONS								MASS KG
	MM	INS	A	B	E	F	G	C	D	L	
70	32	1 1/4	69	60	31	25	18	20	23.5	65	1.2
90	42	1 5/8	85	70	32	30.5	22.5	26	30	82.5	1.68
110	55	2 1/8	112	100	45	45	29	37	45	119	7.2
130	60	2 3/8	130	105	50	53	36	47	55.5	147	7.86
150	70	2 3/4	150	115	62	60	40	50	60	160	10.25
180	80	3 1/8	180	125	77	73	49	58	70	189	23.9
230	100	4"	225	155	99	85.5	59.5	77	90	239.5	37.44
280	130	5"	275	206	119	105.5	74.5	90	105.5	285.5	72

HRC - Straight bore or taper bore (universal series)

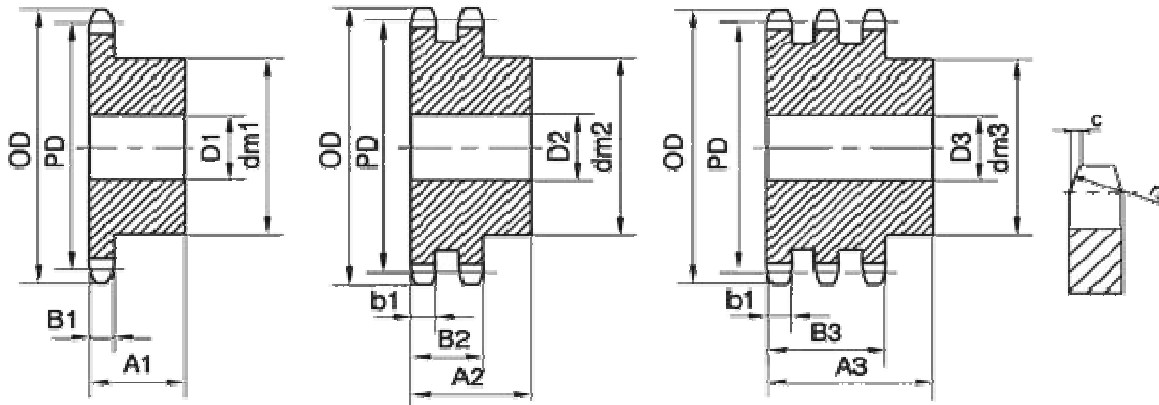
SIZE	MAX BORE		DIMENSIONS								MASS KG
	MM	INS	A	B	E	F	G	C	D	L	
70	32	1 1/4	69	60	31	25	18	20	23.5	65	1.2
90	42	1 5/8	85	70	32	30.5	22.5	19.5	23.5	69.5	1.4
110	55	2 1/8	112	100	45	45	29	18.5	26.5	82	6
130	60	2 3/8	130	105	50	53	36	18	26.5	89	6.55
150	70	2 3/4	150	115	62	60	40	23.5	33.5	107	8.53
180	80	3 1/8	180	125	77	73	49	34.5	46.5	142	19.92
230	100	4"	225	155	99	85.5	59.5	39.5	52.5	164.5	31.2
280	130	5"	275	206	119	105.5	74.5	51	66.5	207.5	60





PILOT BORE PLATE WHEEL

SPC.	r3	C	B1	b1	B2	B3	Z	OD	PD	SIMPLE X	DUPL X	TRIPLE X
										D1	D2	D3
3	5	0.4	2.3				8-125	14.80-200.70	13.06-198.96	4-14		
4	6	0.6	2.6				8-125	18.00-241.20	15.67-238.75	5-16		
05B	8	0.8	2.8	2.7	8.3		8-125	23.40-322.80	20.90-318.34	6-20	8-20	
06B	10	1	5.3	5.2	15.4	25.6	8-125	28.60-383.60	24.89-379.02	6-25	10-25	8-25
81	13	0.8	3				8-125	39.50-512.20	33.18-505.37	8-25		
083/084	13	1.3	4.5				8-125	39.5-168.2	33.18-505.37	8-25		
08B	13	1.3	7.2	7	21	34.9	8-125	38-511	33.18-505.37	8-25	10-25	10-25
10B	16	1.6	9.1	9	25.5	42.1	8-125	48.40-640.10	41.48-631.71	10-30	10-30	10-30
12B	19	2	11.1	10.8	30.3	49.8	8-125	58.00-768.10	49.78-758.05	10-30	12-30	12-30
16B	26	2.5	16.2	15.8	47.7	79.6	8-125	77.90-1024.50	66.37-1010.73	16-30	16-40	16-40
20B	32	3.5	18.5	18.2	54.6	91	8-114	96.00-1168.20	82.96-1152.26	16-40	20-40	20-40
24B	38	4	24.1	23.6	72	120.3	8-95	113.0-1169.0	99.55-1152.33	20-40	25-40	25-40
28B	44	5	29.4	28.8	88.4	148	8-76	132.0-1095.0	116.15-1075.62	20-40	25-40	25-40
32B	51	6	29.4	28.8	87.4	146	8-76	152.00-1252.00	132.74-1229.27	25-40	25-40	25-40



SPC.	r3	C	B1	b1	B2	B3	Z	OD	PD	SIMPLEX			DUPLEX			TRIPLEX		
										dm1	D1	A1	dm2	D2	A2	dm3	D3	A3
03	5	0.4	2.3				8-40	14.8-65.5	13.06-63.73	7-30	4-8	10-15						
04	6	0.6	2.6				8-57	18.0-111.4	15.67-108.93	9.8-62	5-12	10-18						
05B	8	0.8	2.8	2.7	8.3		8-57	23.4-149.3	20.9-145.22	13-80	6-14	12-20	12-60	6-12	18-22			
06B	10	1	5.3	5.2	15.4	25.6	8-95	28.5-292.7	24.89-288.08	15-88	8-25	20-40	15-108	8-25	25-50	15-120	8-25	32-60
081	13	0.8	3				8-100	39.5-168.2	33.18-161.87	21-70	8-16	14-25						
083/084	13	1.3	4.5				8-40	39.5-168.2	33.18-161.87	21-70	8-16	14-25						
08B	13	1.3	7.2	7	21	34.9	8-95	38.0-390.70	33.18-384.11	20-108	10-25	25-42	20-120	10-25	32-55	20-136	10-25	46-68
10B	16	1.6	9.1	9	25.5	42.1	8-95	48.4-488.50	41.48-480.14	25-118	10-30	25-59	25-145	12-30	40-59	25-145	12-30	55-75
12B	19	2	11.1	10.8	30.3	49.8	8-95	58.0-586.20	49.78-576.17	31-133	12-30	30-62	31-145	12-30	45-63	31-150	16-30	65-75
16B	26	2.5	16.2	15.8	47.7	79.6	8-95	77.9-782.0	66.37-768.22	42-160	16-30	35-78	42-180	20-40	65-109	42-180	20-40	95-112
20B	32	3.5	18.5	18.2	54.6	91	8-95	96.0-976.20	82.96-960.28	53-168	20-30	40-90	53-200	20-30	75-116	53-200	25-40	110-140
24B	38	4	24.1	23.6	72	120.3	8-95	113.0-1169.0	99.55-1152.33	58-160	20-40	45-118	58-220	25-40	95-133	58-250	25-40	140-155
28B	44	5	29.4	28.8	88.4	148	8-76	132.0-1095.0	116.15-1075.62	74-180	25-40	70-90	74-200	30-40	120-150	74-238	30-40	180-217
32B	51	6	29.4	28.8	87.4	146	8-76	152.0-1252.0	132.74-1229.27	85-218	30-40	80-123	85-218	30-40	120-123	85-238	30-40	180-216